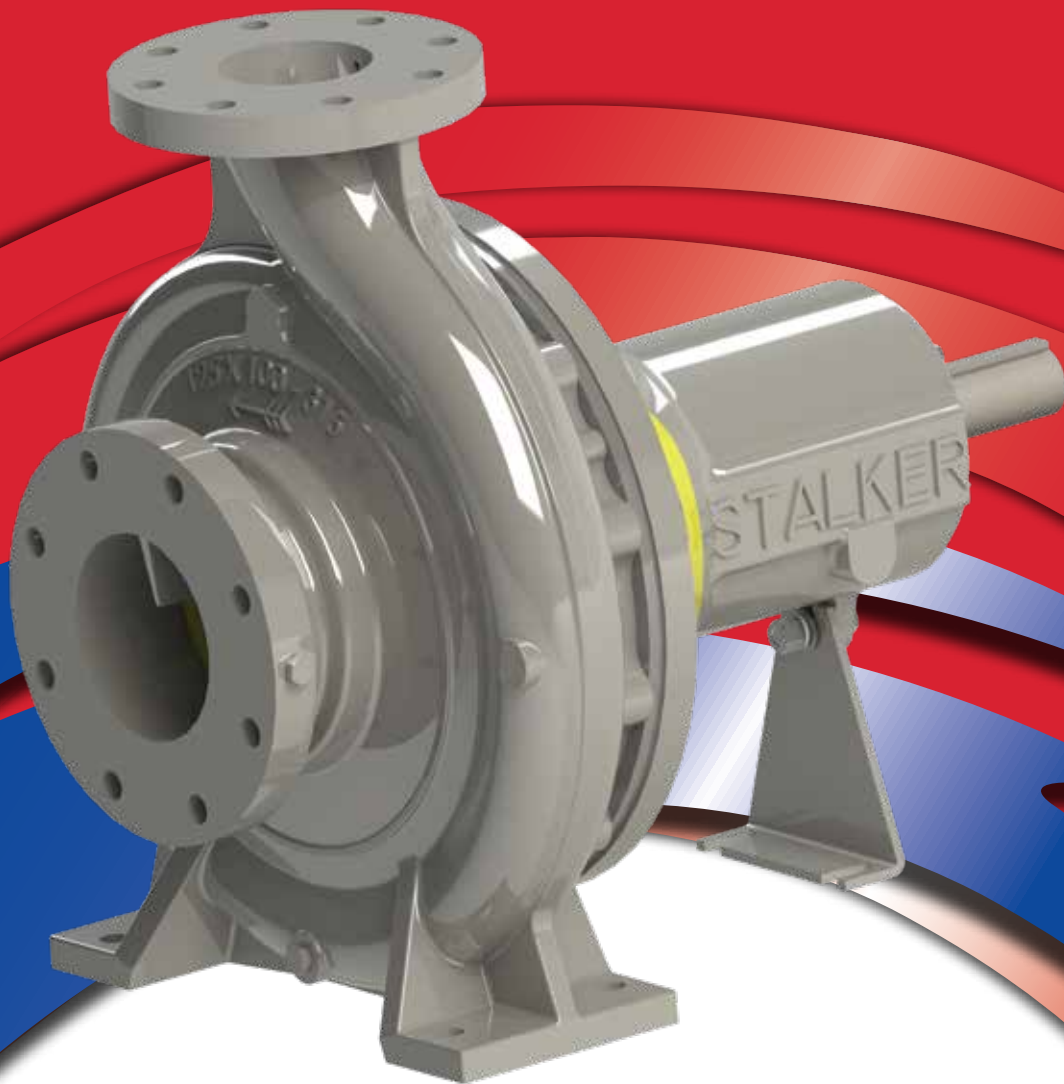


ISO Series

ISO 2858 End Suction
Bare Shaft Pumps



ISO Series - ISO 2858 End Suction Bare Shaft Pumps

Features

Double-Spigot Impeller

- Fitted wear rings optional extra
- Taper shaft and woodruff key mounted impeller

Table 'E' Flanges Standard

- Optional ANSI and DIN flanges

Materials of Construction

- Standard Cast-Iron/
Cast-Iron/Stainless Steel
- Other materials available on request
- Internal ceramic coating available on request

Mechanical Seal

- Carbon/Ceramic/Nitrile standard
- Optional upgrades: - SiC/SiC/Nitrile
- SiC/SiC/Viton
- API flush plan 11 or 31
- Single cartridge, double cartridge
- Dry run seal with barrier tank
- Further options available on request

Bearing Pedestal

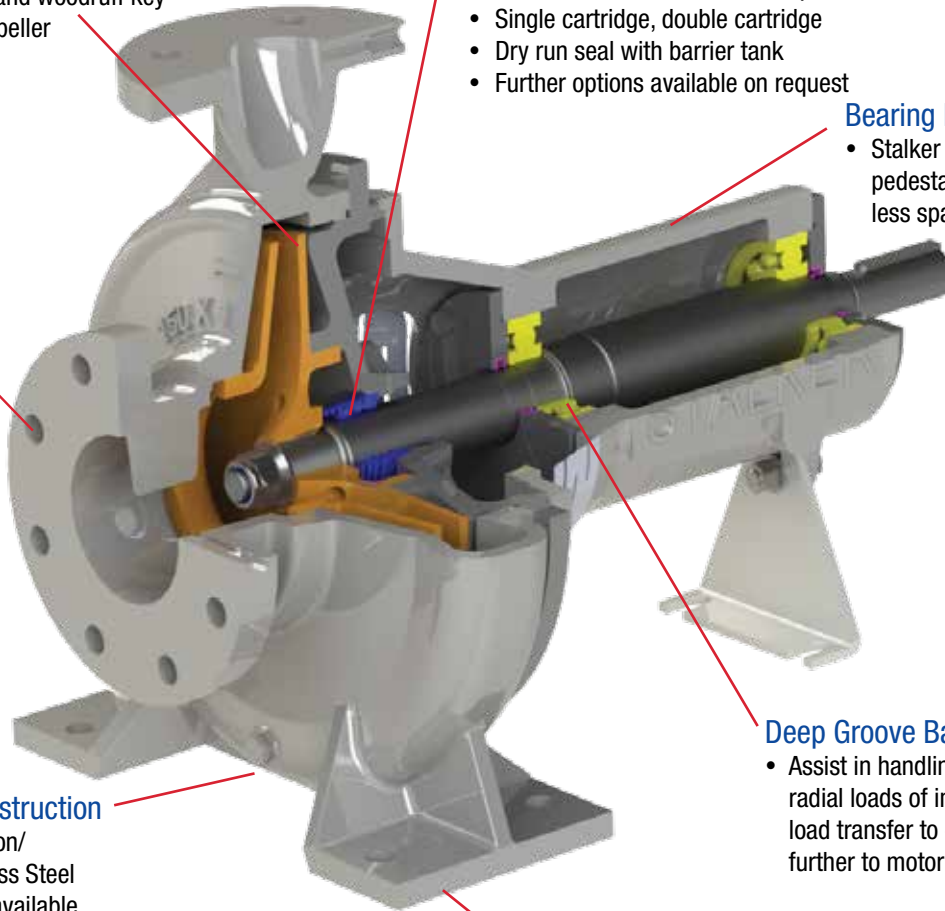
- Stalker standard ISO bearing pedestal, which allows for less spares holding on site

Deep Groove Ball Bearings

- Assist in handling axial and radial loads of impeller, reducing load transfer to coupling and further to motor shaft

Heavy-Duty Cast Feet on Volute

- ISO standard footprint



Material Options

Our ISO pumps come in a range of material options, starting from cast iron and ductile iron for general industrial applications, bronze and stainless steel 316 for potable water and pool industries and exotic materials to suit high corrosion and high wear applications, like H3C stainless steel, 27% chrome iron, austenitic iron, duplex and super duplex stainless steel.

Cast Iron / Cast Iron / 431SS	27% Chrome Iron / 27% Chrome Iron / 431SS
Cast Iron / Bronze / 431SS	316SS / 316SS / 316SS
Bronze / Bronze / 431SS	H3C / H3C / 316SS
SG Iron / SG Iron / 431SS	All Duplex SS construction
Austenitic Iron / Austenitic iron / 431SS	All Super Duplex SS construction

Foundry

We are one of the last remaining pump suppliers in Australia with a foundry on site, giving us complete control of the end to end manufacturing process. We manufacture both a stocked range of pumps and custom designed pumps and pumping systems. Our foundry enables us to provide complete flexibility, including manufacturing high quality castings from customer supplied patterns. We can also cast pumps in more than 19 types of ferrous and non-ferrous metals.



ISO Series - ISO 2858 End Suction Bare Shaft Pumps

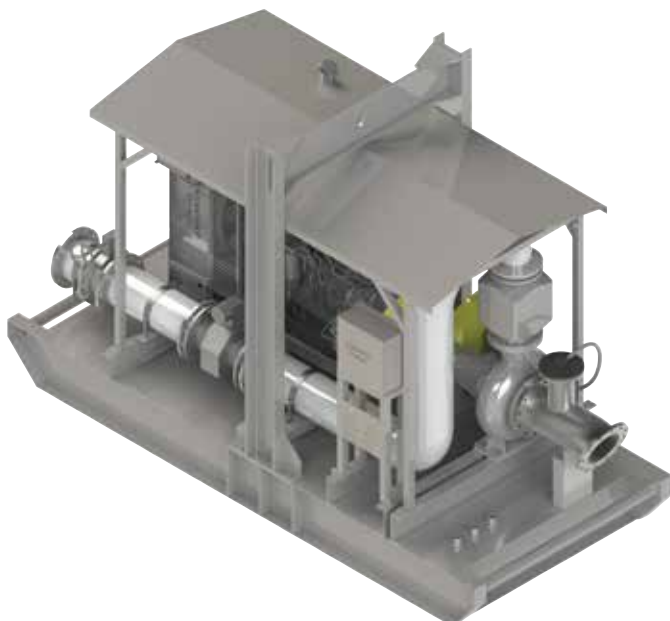
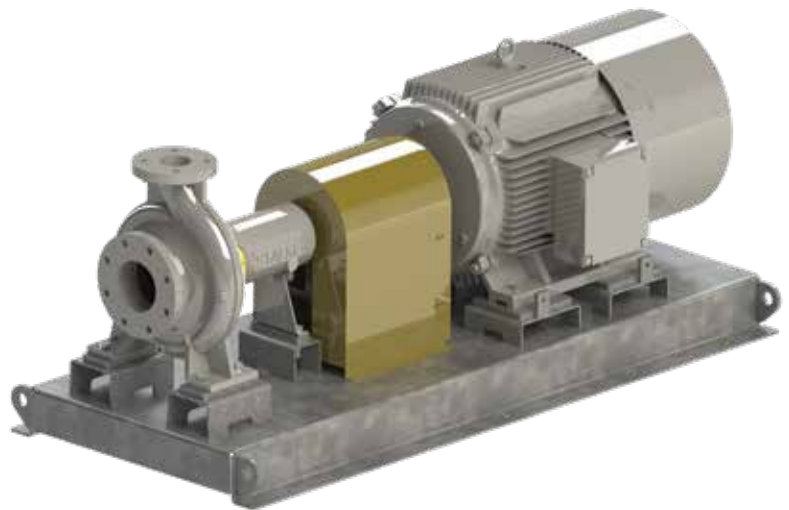


Cartridge Seal and Barrier Fluid Tank Unit

- Ideal for dry-run auto priming applications. Double mechanical cartridge seal with pumping ring, fitted with barrier tank quench
- Other cartridge seal options – single cartridge seal with product/ external flushing, double seal with barrier tank quench
- Various seal flushing options available on request, API11 and API31 as most common
- Other specialised application specific sealing solutions available on request

Long Coupled Unit

- Mild steel hot dip galvanised, SS304 or SS316 material of construction option
- Pump and motor mounted on machined pads, eliminates soft foot on alignment
- Laser cut precision sheet metal base is highly customisable and eliminates restrictions to footprint and centre heights compared to conventional channel bases
- Folded sheet metal design reduces excessive welding resulting in less distortion of skid base
- State of the art manufacturing facility enables quick turnaround of base and reduces risk of manual errors

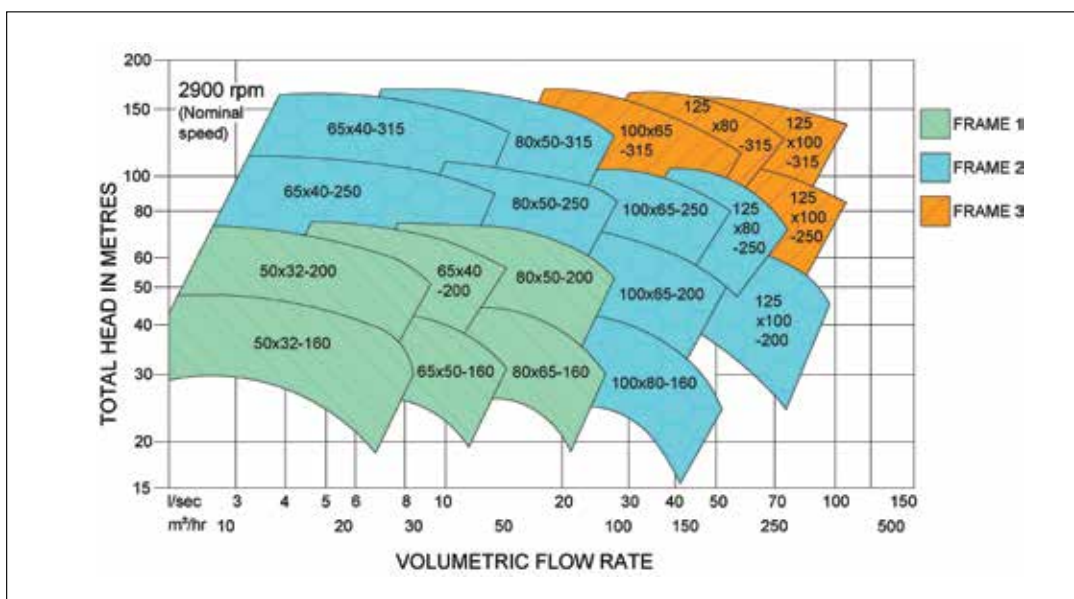
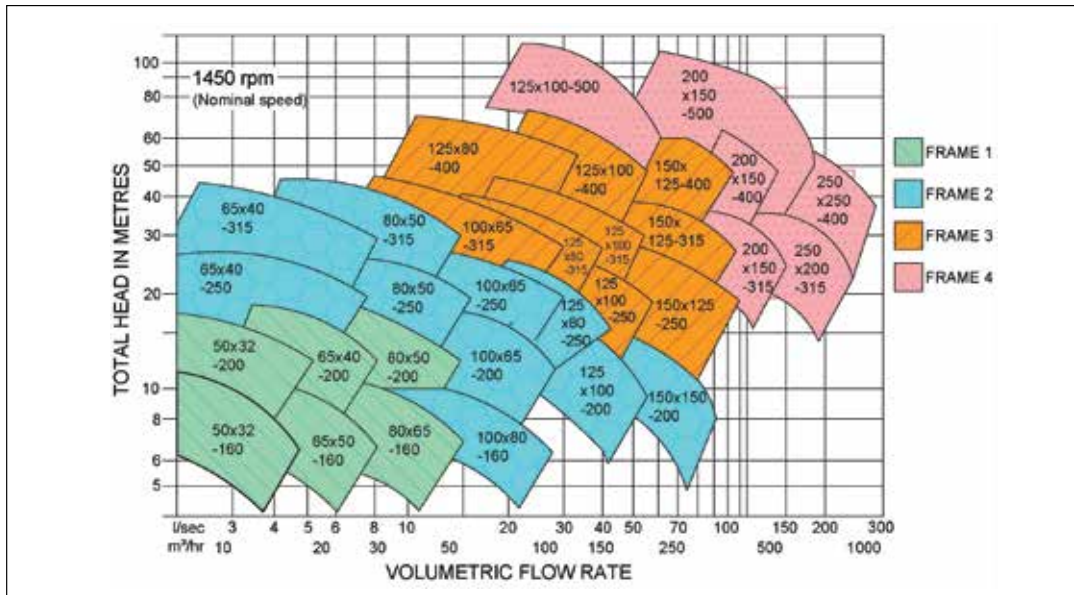
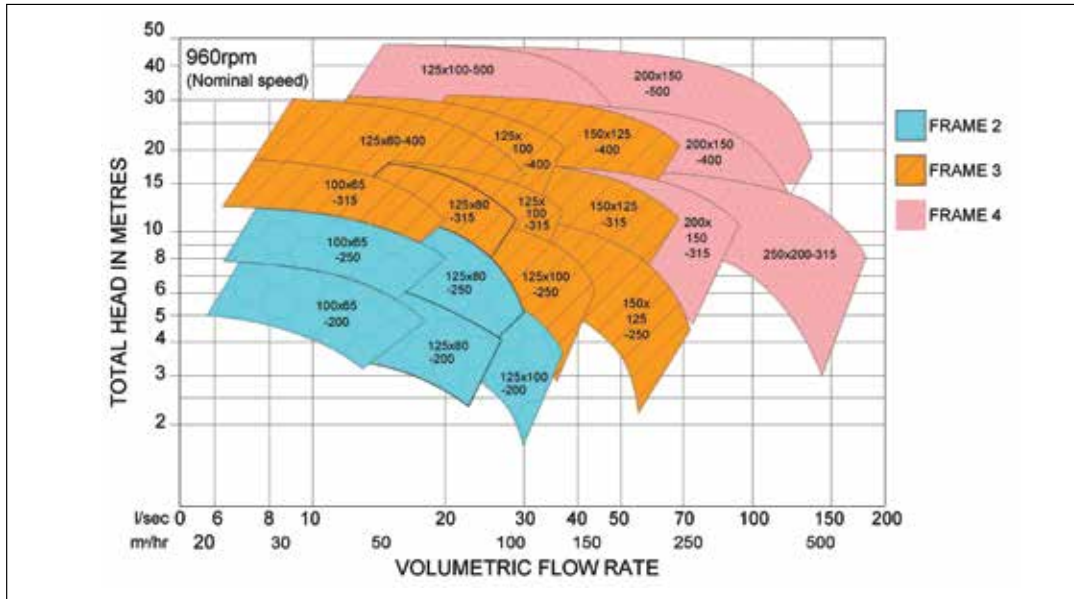


Diesel Driven Unit

- Heavy duty skid base frame with inbuilt fuel tank
- Auto prime suction tee unit and dry run mechanical seal fitted
- Single point lifting frame, four point towing eyes and tie down locations
- Various engine and controller options, Cummins, CAT, Deutz, Kohler, Murphy, Kensho etc
- Work lights, beacon light, mechanical fuel gauge, fuel filler/ breather, emergency stop, fire extinguisher, battery isolator, starter isolator
- Pressure gauges, pressure transducer, flow meter, float switches

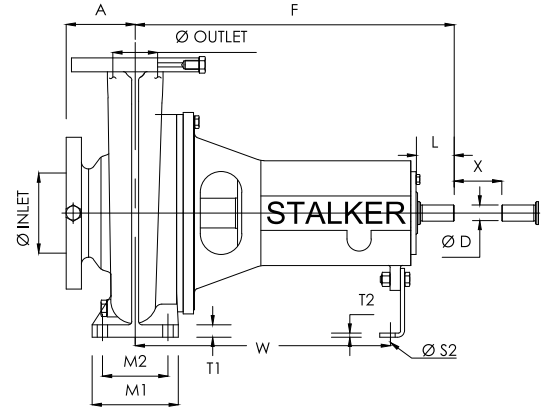
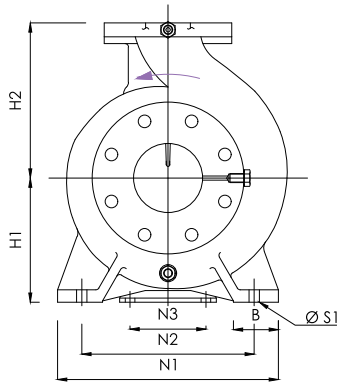
ISO Series - ISO 2858 End Suction Bare Shaft Pumps

Performance Curves



ISO Series - ISO 2858 End Suction Bare Shaft Pumps

Pump Dimensions



Pump Size			Shaft No.	Pump Dimensions				Mounting Dimensions									Bolt Holes		Shaft		
INLET	OUTLET	IMP Ø		A	F	H1	H2	B	M1	M2	N1	N2	N3	T1	T2	W	S1	S2	D	L	X
50	32	160	1	80	385	132	160	50	100	70	240	190	140	12	6	285	Ø15	Ø15	Ø24	50	100
50	32	200	1	80	385	160	180	50	100	70	240	190	140	12	6	285	Ø15	Ø15	Ø24	50	100
65	40	200	1	100	385	160	180	50	100	70	265	212	140	15	6	285	Ø15	Ø15	Ø24	50	100
65	40	250	2	100	500	180	225	65	125	95	320	250	140	14	6	370	Ø15	Ø15	Ø32	80	100
65	40	315	2	125	500	200	250	65	125	95	345	280	140	18	6	370	Ø15	Ø15	Ø32	80	100
65	50	160	1	80	385	132	160	50	100	70	240	190	140	12	6	285	Ø15	Ø15	Ø24	50	100
80	50	200	1	100	385	160	200	50	100	70	265	212	140	15	6	285	Ø15	Ø15	Ø24	50	100
80	50	250	2	125	500	180	225	65	125	95	320	250	140	14	6	370	Ø15	Ø15	Ø32	80	100
80	50	315	2	125	500	225	280	65	125	95	345	280	140	18	6	370	Ø15	Ø15	Ø32	80	100
80	65	160	1	100	385	160	180	50	100	70	265	212	140	15	6	285	Ø15	Ø15	Ø24	50	100
100	65	200	2	100	500	180	225	65	125	95	320	250	140	18	6	370	Ø15	Ø15	Ø32	80	140
100	65	250	2	125	500	200	250	80	160	120	360	280	140	16	6	370	Ø18	Ø15	Ø32	80	140
100	65	315	3	125	530	225	280	75	160	120	400	315	140	18	6	370	Ø18	Ø15	Ø42	110	140
100	80	160	2	100	500	160	200	65	125	95	280	212	140	16	6	370	Ø15	Ø15	Ø32	80	100
125	80	250	2	125	500	225	280	80	160	120	400	315	110	18	6	370	Ø16	Ø12	Ø32	80	140
125	80	315	3	125	530	250	315	80	160	120	400	315	110	20	8	370	Ø16	Ø12	Ø42	110	140
125	80	400	3	125	530	280	355	80	160	120	435	355	140	18	6	370	Ø18	Ø15	Ø42	110	140
125	100	200	2	125	500	200	280	82	160	120	360	280	140	18	6	370	Ø18	Ø15	Ø32	80	140
125	100	250	3	140	530	225	280	76	160	120	400	315	140	20	6	370	Ø18	Ø15	Ø42	110	140
125	100	315	3	142	530	250	315	75	160	120	390	315	140	20	6	370	Ø18	Ø15	Ø42	110	140
125	100	400	3	140	530	280	355	95	200	150	500	400	140	19	6	370	Ø22	Ø15	Ø42	110	140
125	100	500	4	160	670	355	450	100	210	150	550	450	200	25	10	500	Ø24	Ø18	Ø55	110	180
150	125	250	3	140	530	250	355	80	160	120	400	315	140	20	6	370	Ø18	Ø15	Ø42	110	140
150	125	315	3	140	530	280	355	100	200	150	500	400	140	22	6	370	Ø24	Ø15	Ø42	110	140
150	125	400	3	140	530	315	400	100	200	150	500	400	140	20	6	370	Ø22	Ø15	Ø42	110	140
150	150	200	2	140	530	250	315	60	160	120	365	315	140	16	6	370	Ø18	Ø15	Ø42	110	180
200	150	315	4	160	670	315	400	100	200	150	550	450	200	25	10	500	Ø24	Ø18	Ø48	110	180
200	150	400	4	160	670	315	450	100	205	150	550	450	200	30	10	500	Ø22	Ø18	Ø48	110	180
200	150	500	4	160	670	400	505	100	220	150	550	450	200	32	10	500	Ø24	Ø18	Ø55	110	180
200	200	400	4	180	670	355	450	100	250	200	600	500	140	30	10	500	Ø22	Ø18	Ø48	110	180
250	200	315	4	180	670	315	450	100	200	150	550	450	200	25	10	500	Ø24	Ø18	Ø48	110	180
250	250	400	4	200	670	400	500	105	250	200	600	500	200	32	10	500	Ø24	Ø18	Ø55	110	180

All dimensions are stated in millimetres.



STALKER PUMPS

A DIVISION OF MALCOLM THOMPSON PUMPS

www.stalkerpumps.com.au
sales@stalkerpumps.com.au

Unit 1, 33 Colquhoun Road, Perth Airport WA 6105

Ph: 1800 290 573

Fax: +61 8 6254 2146

ABN 28 009 095 818

DISTRIBUTED BY

For information on these products or for any specialised requirements please contact your local Malcolm Thompson Pumps distributor or visit our website at www.mtp.com.au